



NATA LIGHTING CO.,LTD.
www.nata.cn
Email:info@nata.com
Tel:+86-750-3770000 Fax:+86-750-3771111
Address:380JinOu Road,GaoXin Zone,Jiang Men City,Guangdong,China

NT

Client:

LumCAT: 2-2689-L

Luminaire: 92.70.412.00

Report No: 2024320-B013

Ballast type: AC

Test No: 2024320-C013

Voltage(V): 35.170

LampCAT: Fortimo_SLM_C_1205

Current(A): 0.451

Lamp flux(lm): 2717.0

Power (W): 15.861

Number of Lamps: 1

PF: 0.000

Length(mm): 0

Width(mm): 0

Phm Type: C

Height(mm): 0

Photometric Results

Lumens(lm): 2246.68, Efficiency(%): 82.69% , Luminous Efficacy(lm/W): 141.65

Central intensity(cd): 4082.442, Maximum intensity(cd): 4082.442

Angle of maximum intensity: C=0.0 γ =0.0

Beam Angle(50%Imax): [C0/180]Total=44.2

[C90/270]Total=44.2

Field angle(10%Imax): [C0/180]Total=65.8

[C90/270]Total=65.8

Maximum s/h(1/2): C0_180=0.71 C90_270=0.71

Maximum s/h(1/4): C0_180=0.69 C90_270=0.69

Up flux rate of lamp(%): 0.00%

Down flux rate of lamp(%): 82.69%

Up flux rate of LUM(%): - -

Down flux rate of LUM(%): 100.00%

CIE Type : Direct lighting

Output flux ratio in π solid angle : 97.814%

Equipment: GMS1980
Temperature(°C): 25.0

Date: 2024/3/20
Humidity(%): 60.0%

Operator: NT07
Distance(m): 7.65

$\gamma(^{\circ})$	Average I(cd)	Zonal F(lm)	Sum F(lm)	Eff Flux(%)	Eff Sum(%)
0.0	4082.442	0.000	0	0.00%	0.00%
1.0	4081.271	3.906	3.906	0.14%	0.17%
2.0	4076.370	11.709	15.615	0.43%	0.70%
3.0	4063.934	19.469	35.084	0.72%	1.56%
4.0	4041.476	27.131	62.215	1.00%	2.77%
5.0	4006.875	34.624	96.839	1.27%	4.31%
6.0	3964.446	41.891	138.73	1.54%	6.17%
7.0	3909.727	48.875	187.605	1.80%	8.35%
8.0	3840.086	55.464	243.069	2.04%	10.82%
9.0	3757.569	61.575	304.644	2.27%	13.56%
10.0	3662.909	67.153	371.796	2.47%	16.55%
11.0	3561.006	72.182	443.978	2.66%	19.76%
12.0	3443.961	76.574	520.552	2.82%	23.17%
13.0	3313.749	80.197	600.749	2.95%	26.74%
14.0	3187.560	83.216	683.966	3.06%	30.44%
15.0	3056.177	85.717	769.682	3.15%	34.26%
16.0	2926.696	87.666	857.348	3.23%	38.16%
17.0	2778.999	88.853	946.201	3.27%	42.12%
18.0	2645.276	89.435	1035.636	3.29%	46.10%
19.0	2500.652	89.529	1125.164	3.30%	50.08%
20.0	2359.320	88.951	1214.115	3.27%	54.04%
21.0	2204.894	87.642	1301.758	3.23%	57.94%
22.0	2056.393	85.632	1387.39	3.15%	61.75%
23.0	1907.160	83.166	1470.556	3.06%	65.45%
24.0	1764.073	80.266	1550.822	2.95%	69.03%
25.0	1618.937	76.922	1627.745	2.83%	72.45%
26.0	1416.859	71.660	1699.405	2.64%	75.64%
27.0	1252.981	65.318	1764.723	2.40%	78.55%
28.0	1133.654	60.425	1825.148	2.22%	81.24%
29.0	973.361	55.125	1880.273	2.03%	83.69%
30.0	807.479	48.082	1928.355	1.77%	85.83%
31.0	656.213	40.732	1969.088	1.50%	87.64%
32.0	520.426	33.709	2002.797	1.24%	89.14%
33.0	394.054	26.941	2029.738	0.99%	90.34%
34.0	296.724	20.905	2050.643	0.77%	91.27%
35.0	246.511	16.871	2067.514	0.62%	92.03%
36.0	187.170	13.808	2081.322	0.51%	92.64%
37.0	134.682	10.497	2091.819	0.39%	93.11%

$\gamma(^{\circ})$	Average I(cd)	Zonal F(lm)	Sum F(lm)	Eff Flux(%)	Eff Sum(%)
38.0	116.240	8.375	2100.195	0.31%	93.48%
39.0	104.346	7.529	2107.724	0.28%	93.82%
40.0	95.809	6.981	2114.705	0.26%	94.13%
41.0	87.989	6.545	2121.25	0.24%	94.42%
42.0	81.098	6.143	2127.393	0.23%	94.69%
43.0	74.989	5.782	2133.175	0.21%	94.95%
44.0	69.722	5.462	2138.637	0.20%	95.19%
45.0	64.989	5.177	2143.814	0.19%	95.42%
46.0	60.644	4.913	2148.727	0.18%	95.64%
47.0	56.686	4.667	2153.394	0.17%	95.85%
48.0	53.138	4.440	2157.833	0.16%	96.05%
49.0	49.949	4.233	2162.067	0.16%	96.23%
50.0	46.935	4.039	2166.106	0.15%	96.41%
51.0	43.958	3.846	2169.952	0.14%	96.58%
52.0	41.266	3.657	2173.609	0.13%	96.75%
53.0	38.896	3.487	2177.096	0.13%	96.90%
54.0	36.716	3.333	2180.428	0.12%	97.05%
55.0	34.470	3.178	2183.606	0.12%	97.19%
56.0	32.597	3.031	2186.636	0.11%	97.33%
57.0	30.893	2.903	2189.539	0.11%	97.46%
58.0	29.312	2.784	2192.323	0.10%	97.58%
59.0	27.784	2.669	2194.993	0.10%	97.70%
60.0	26.445	2.562	2197.554	0.09%	97.81%
61.0	25.187	2.464	2200.018	0.09%	97.92%
62.0	23.767	2.359	2202.377	0.09%	98.03%
63.0	22.385	2.245	2204.622	0.08%	98.13%
64.0	21.097	2.134	2206.756	0.08%	98.22%
65.0	19.912	2.030	2208.785	0.07%	98.31%
66.0	18.778	1.930	2210.716	0.07%	98.40%
67.0	17.696	1.834	2212.55	0.07%	98.48%
68.0	17.089	1.762	2214.312	0.06%	98.56%
69.0	16.781	1.728	2216.04	0.06%	98.64%
70.0	16.635	1.716	2217.756	0.06%	98.71%
71.0	16.642	1.720	2219.476	0.06%	98.79%
72.0	16.547	1.726	2221.201	0.06%	98.87%
73.0	16.401	1.723	2222.924	0.06%	98.94%
74.0	16.145	1.711	2224.635	0.06%	99.02%
75.0	15.794	1.688	2226.323	0.06%	99.09%

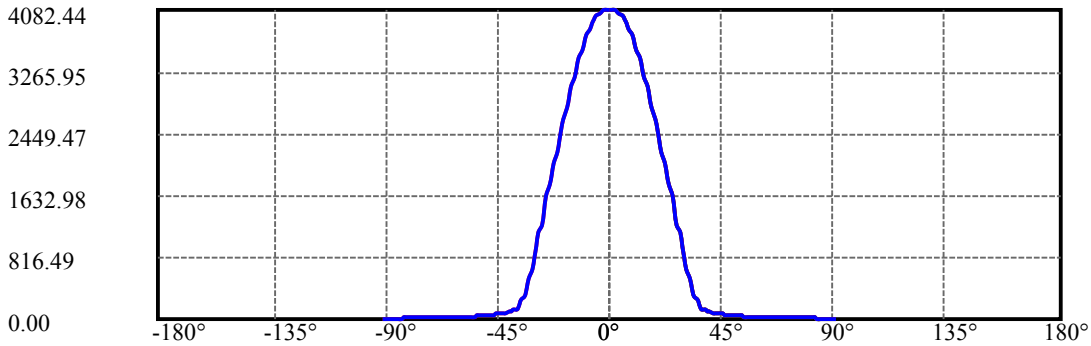
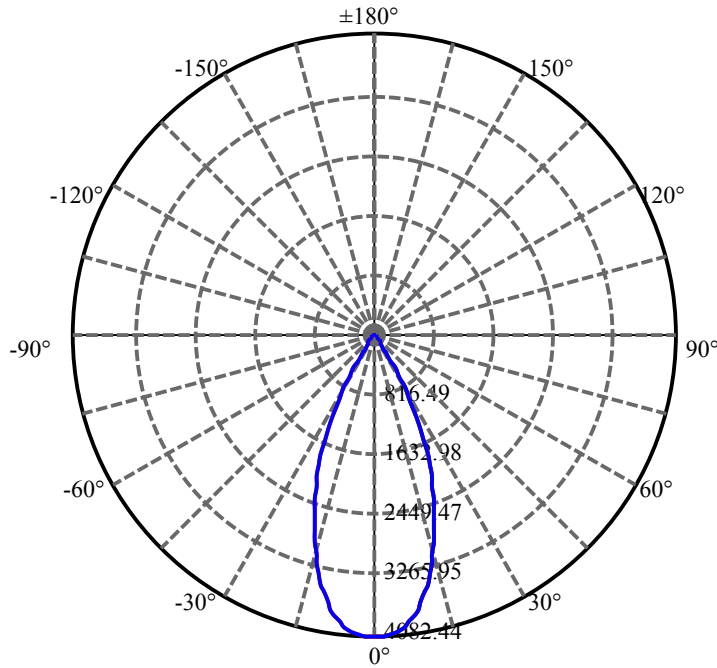
$\gamma(^{\circ})$	Average I(cd)	Zonal F(lm)	Sum F(lm)	Eff Flux(%)	Eff Sum(%)
76.0	15.457	1.659	2227.982	0.06%	99.17%
77.0	15.084	1.628	2229.61	0.06%	99.24%
78.0	14.528	1.585	2231.195	0.06%	99.31%
79.0	14.031	1.534	2232.73	0.06%	99.38%
80.0	13.497	1.484	2234.214	0.05%	99.45%
81.0	13.051	1.436	2235.65	0.05%	99.51%
82.0	12.824	1.403	2237.053	0.05%	99.57%
83.0	12.663	1.385	2238.438	0.05%	99.63%
84.0	12.158	1.352	2239.79	0.05%	99.69%
85.0	11.383	1.285	2241.075	0.05%	99.75%
86.0	10.775	1.211	2242.286	0.04%	99.80%
87.0	10.366	1.157	2243.443	0.04%	99.86%
88.0	9.963	1.114	2244.557	0.04%	99.91%
89.0	9.590	1.072	2245.629	0.04%	99.95%
90.0	9.510	1.047	2246.676	0.04%	100.00%

ZONAL LUMEN SUMMARY

Zone	Lumens	%Lamp	%Fixt
0-30	1928.36	70.97%	85.83%
0-40	2114.70	77.83%	94.13%
0-60	2197.55	80.88%	97.81%
0-90	2245.63	82.65%	99.95%
0-120	2245.63	82.65%	99.95%
0-180	2246.68	82.69%	100.00%
60-90	48.07	1.77%	2.14%
90-120	0.00	0.00%	0.00%
90-130	0.00	0.00%	0.00%
90-150	0.00	0.00%	0.00%
90-180	0.00	0.00%	0.00%
0-27.54	1797.34	66.15%	80.00%

ZONAL LUMEN SUMMARY

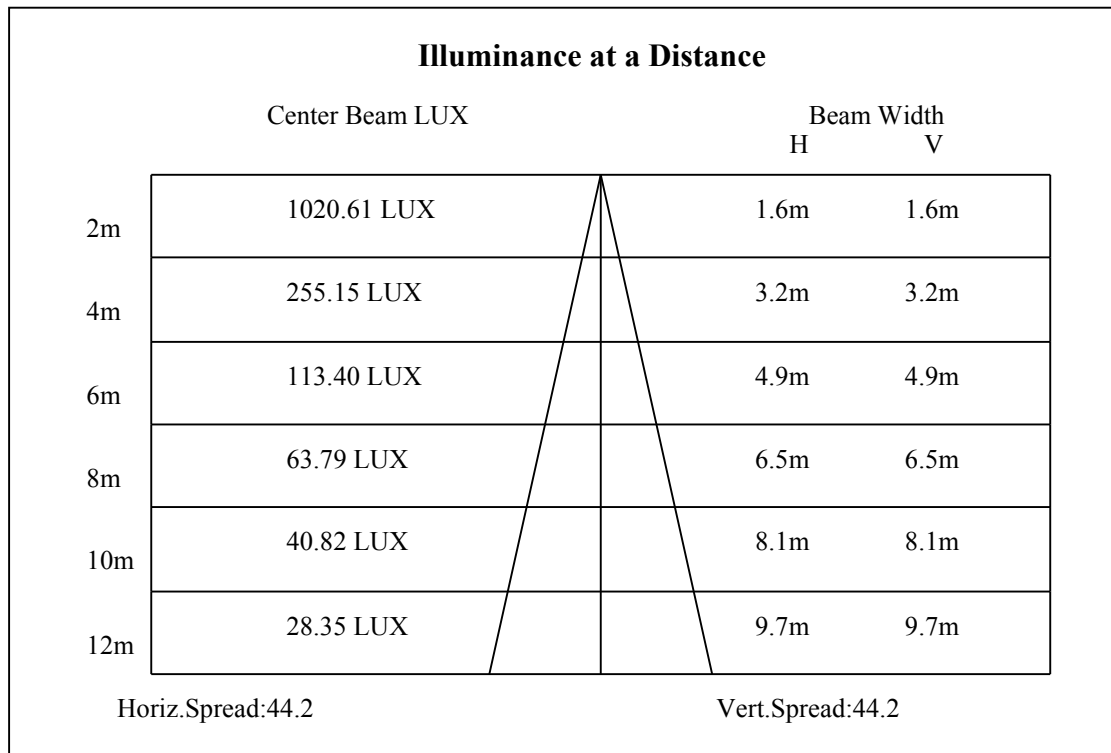
0-10	371.80
10-20	842.32
20-30	714.24
30-40	186.35
40-50	51.40
50-60	31.45
60-70	20.20
70-80	16.46
80-90	11.41
90-100	0.00
100-110	0.00
110-120	0.00
120-130	0.00
130-140	0.00
140-150	0.00
150-160	0.00
160-170	0.00
170-180	0.00

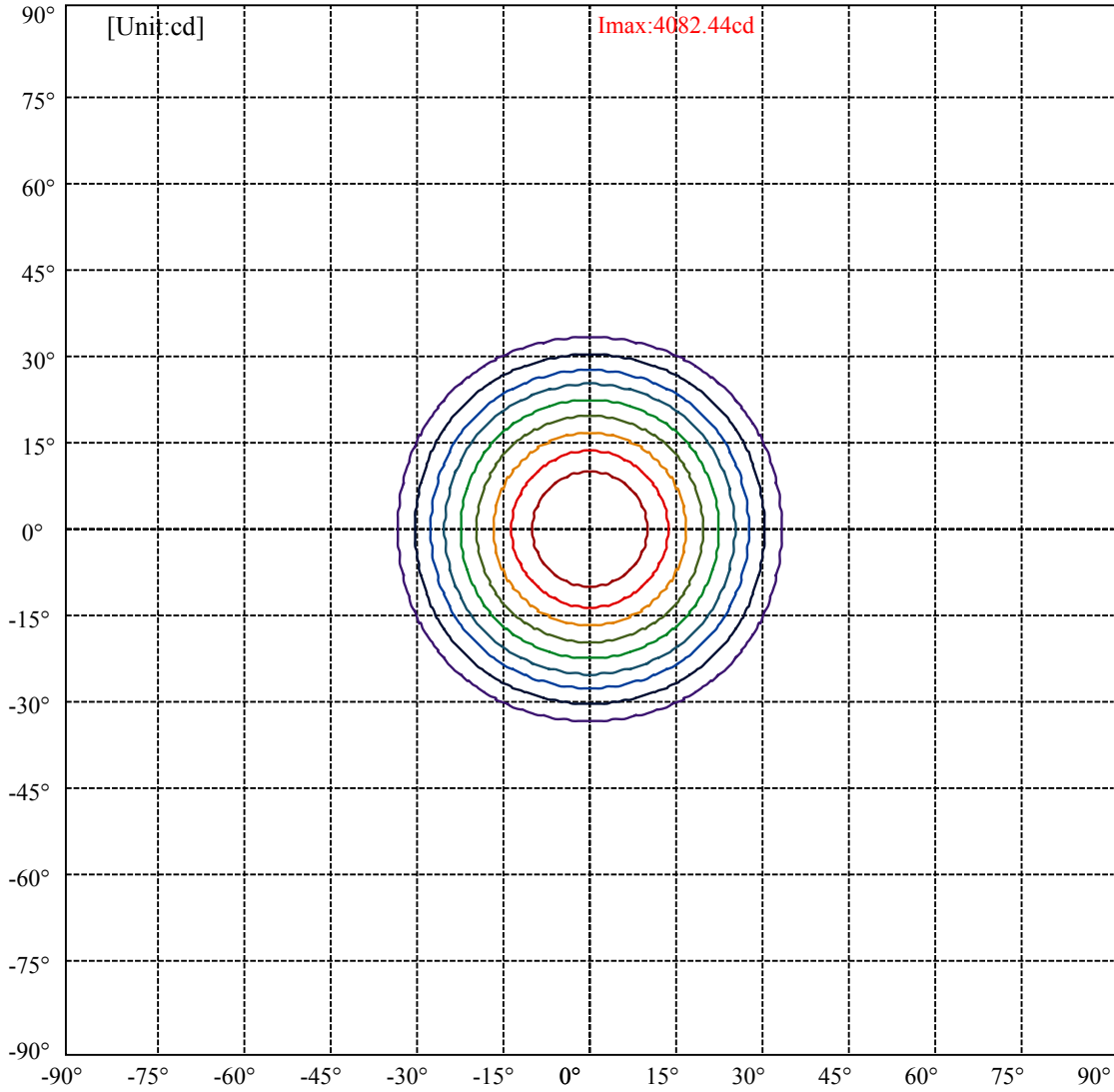


C0(Max): —————
C0/C180: —————
C90/C270: —————

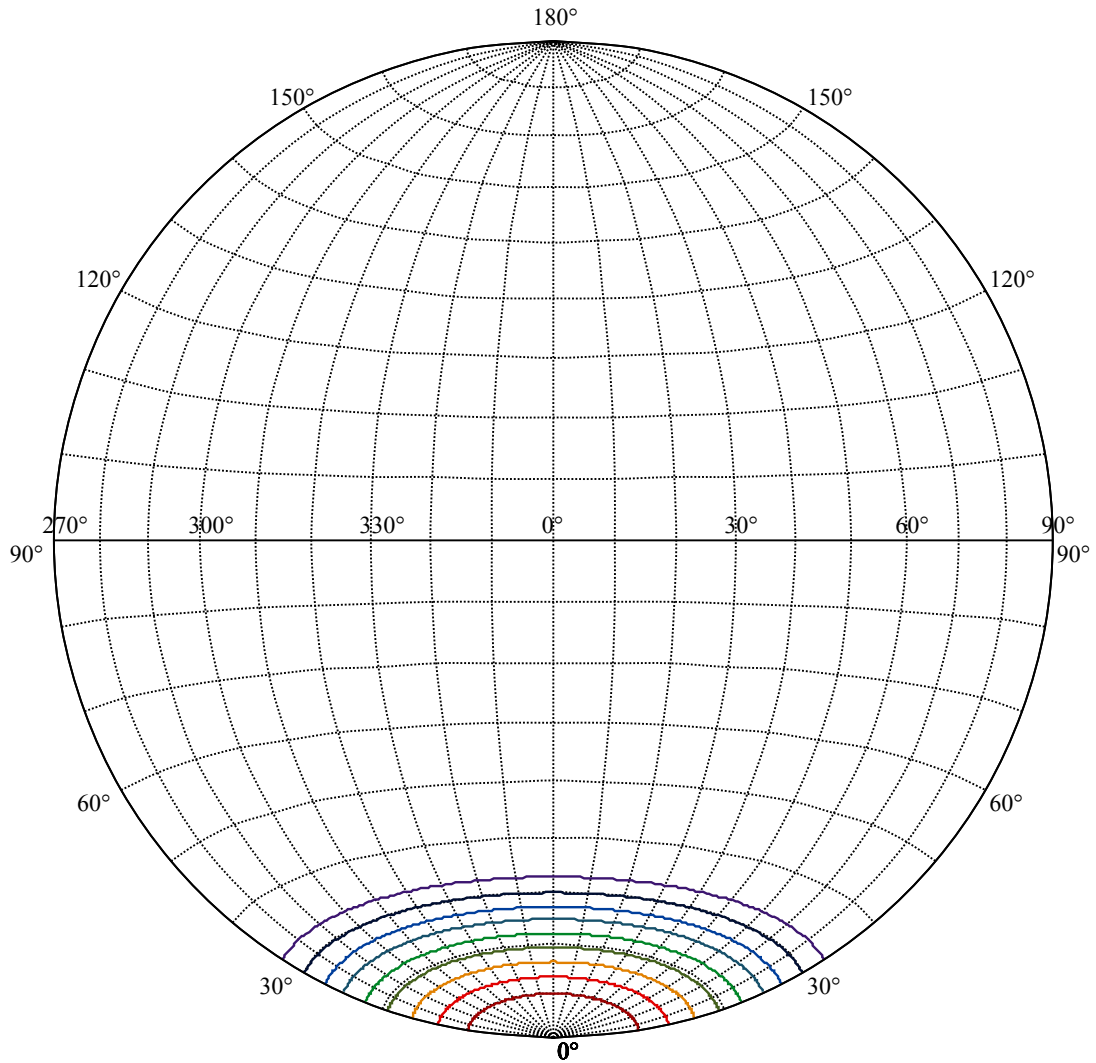
Field angle(10%Imax):C0/180Left:32.9 Right:32.9
:C90/270Left:32.9 Right:32.9

Beam Angle(50%Imax):C0/180Left:22.1 Right:22.1
:C90/270Left:22.1 Right:22.1





(10%Imax) 408.244	—
(20%Imax) 816.488	—
(30%Imax) 1224.73	—
(40%Imax) 1632.98	—
(50%Imax) 2041.22	—
(60%Imax) 2449.47	—
(70%Imax) 2857.71	—
(80%Imax) 3265.95	—
(90%Imax) 3674.2	—



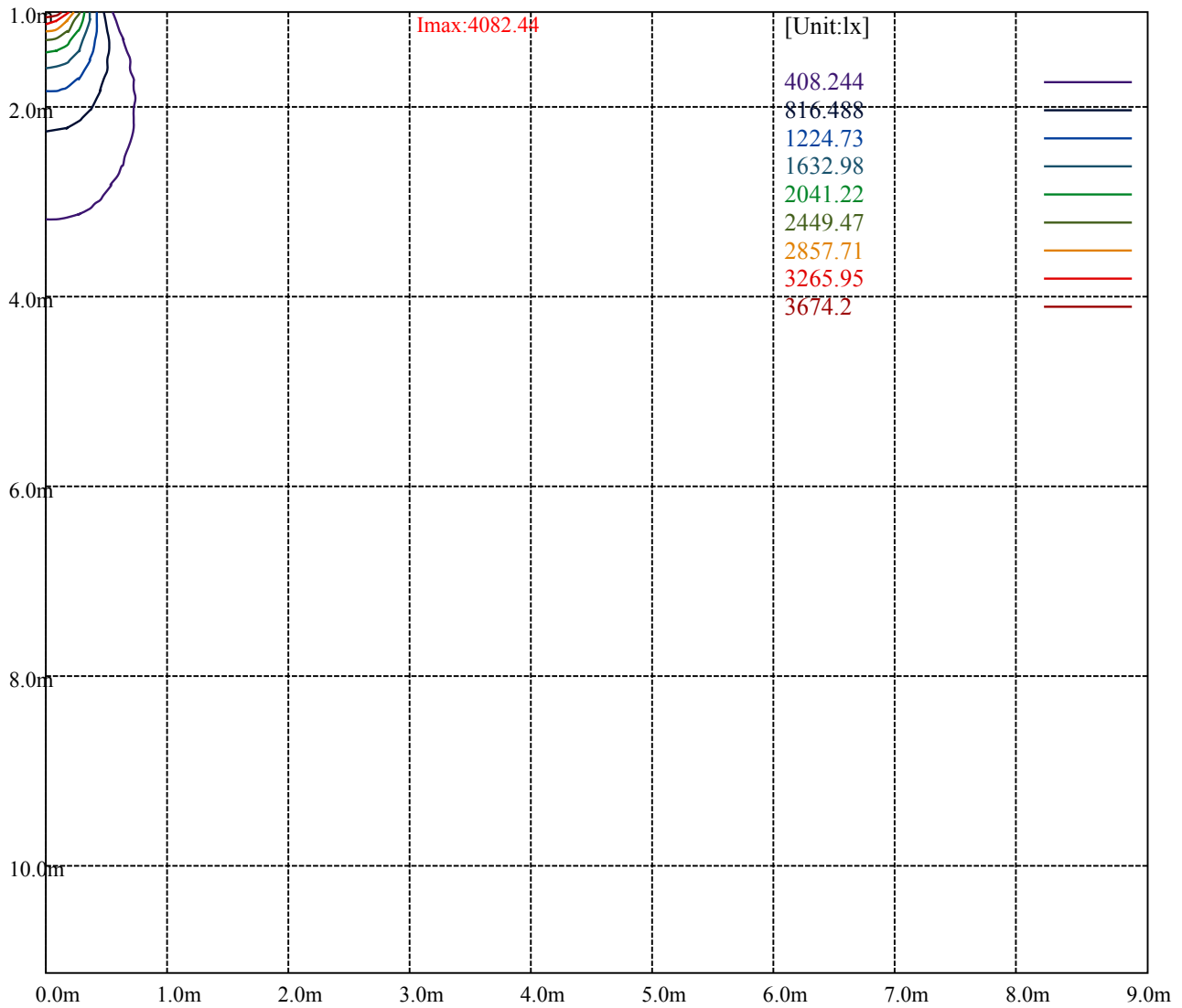
House

[Unit:cd]

Road

Imax:4082.44

(10%Imax)	408.244	—
(20%Imax)	816.488	—
(30%Imax)	1224.73	—
(40%Imax)	1632.98	—
(50%Imax)	2041.22	—
(60%Imax)	2449.47	—
(70%Imax)	2857.71	—
(80%Imax)	3265.95	—
(90%Imax)	3674.2	—



Luminance Table

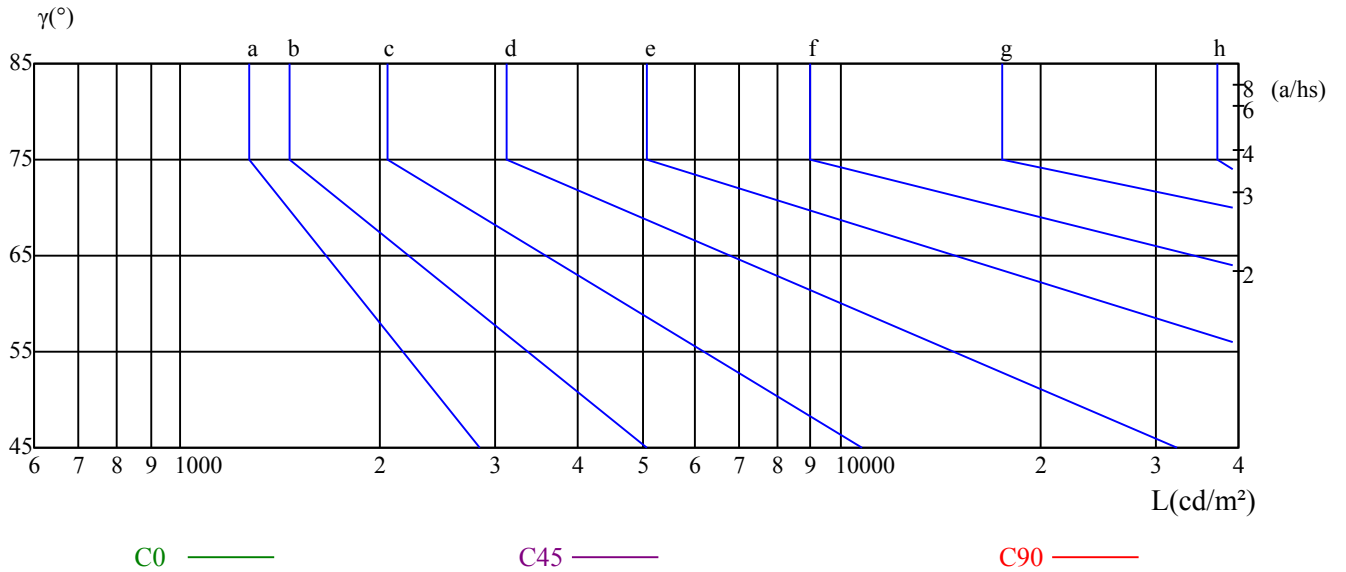
γ	45	50	55	60	65	70	75	80	85
C0	0	0	0	0	0	0	0	0	0
C45	0	0	0	0	0	0	0	0	0
C90	0	0	0	0	0	0	0	0	0

L(Hor)(65)	L(Ver)(65)	L45(65)	L(Hor)(75)	L(Ver)(75)	L45(75)	L(Hor)(85)	L(Ver)(85)	L45(85)
0	0	0	0	0	0	0	0	0

Glare Table

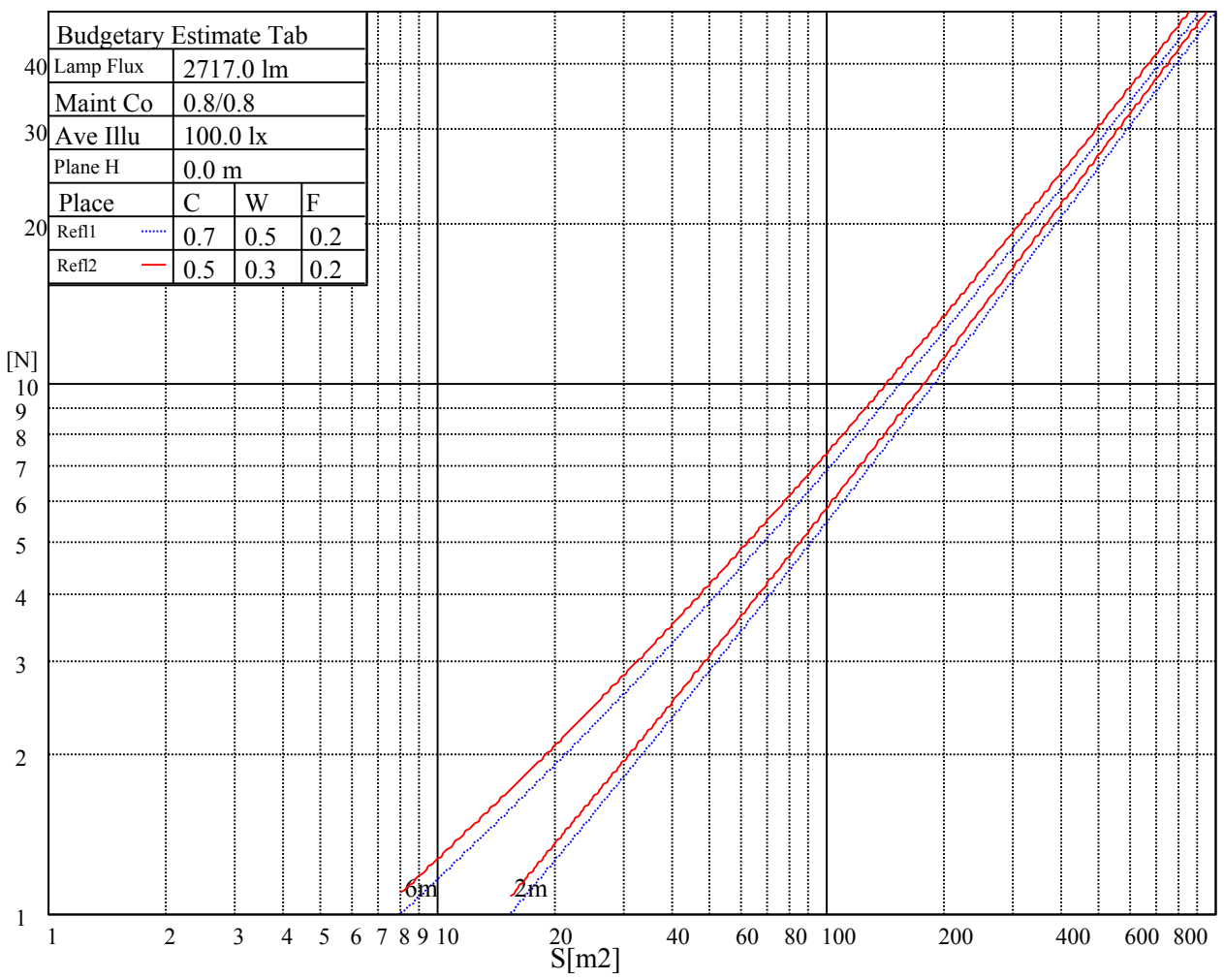
Glare	Quality	Service Values Illuminance(lx)							
1.15	A	2000	1000	500	<=300				
1.5	B		2000	1000	500	<=300			
1.85	C			2000	1000	500	<=300		
2.2	D				2000	1000	500	<=300	
2.55	E					2000	1000	500	<=300
		a	b	c	d	e	f	g	h

Luminance Limiting Curve

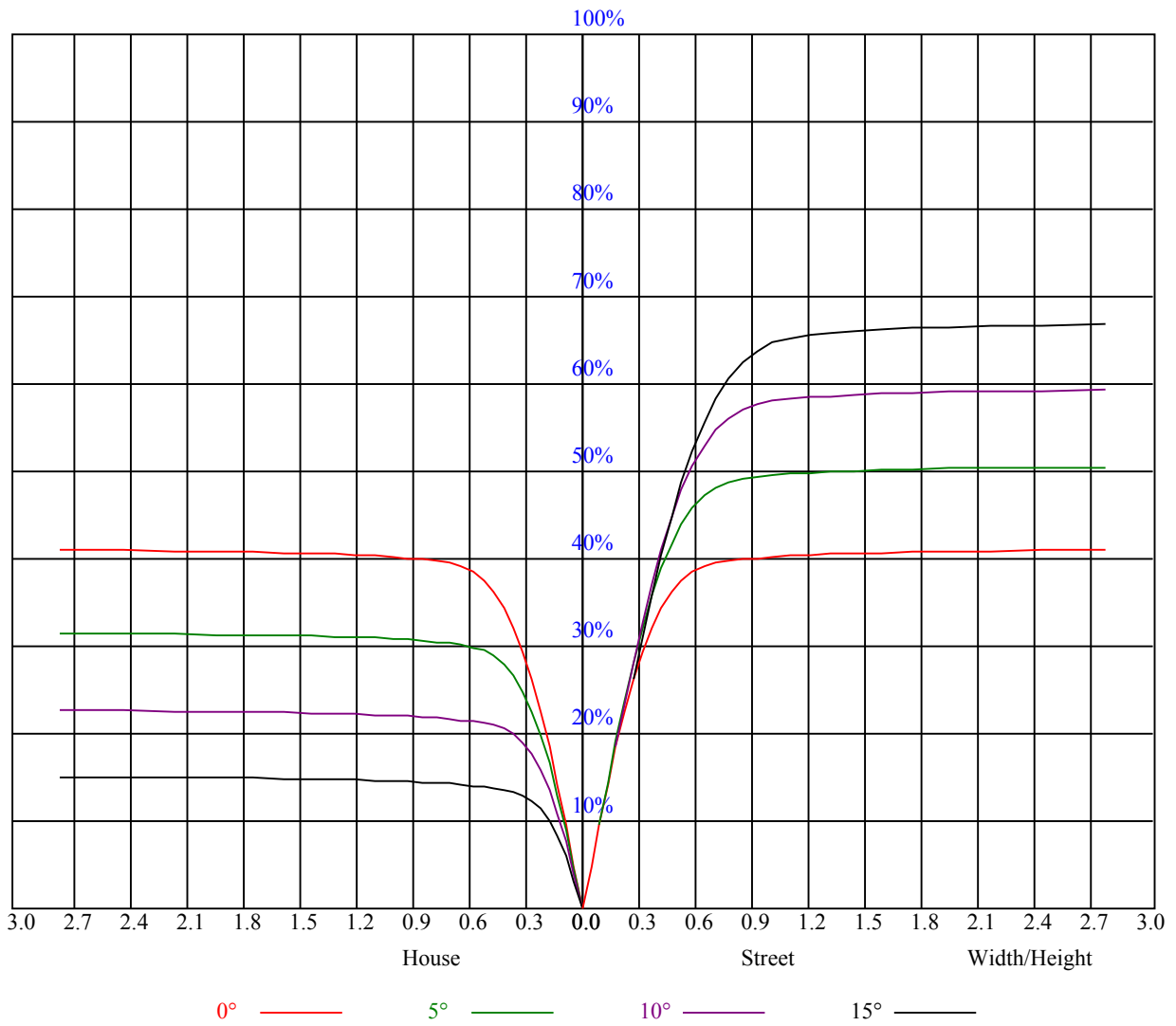


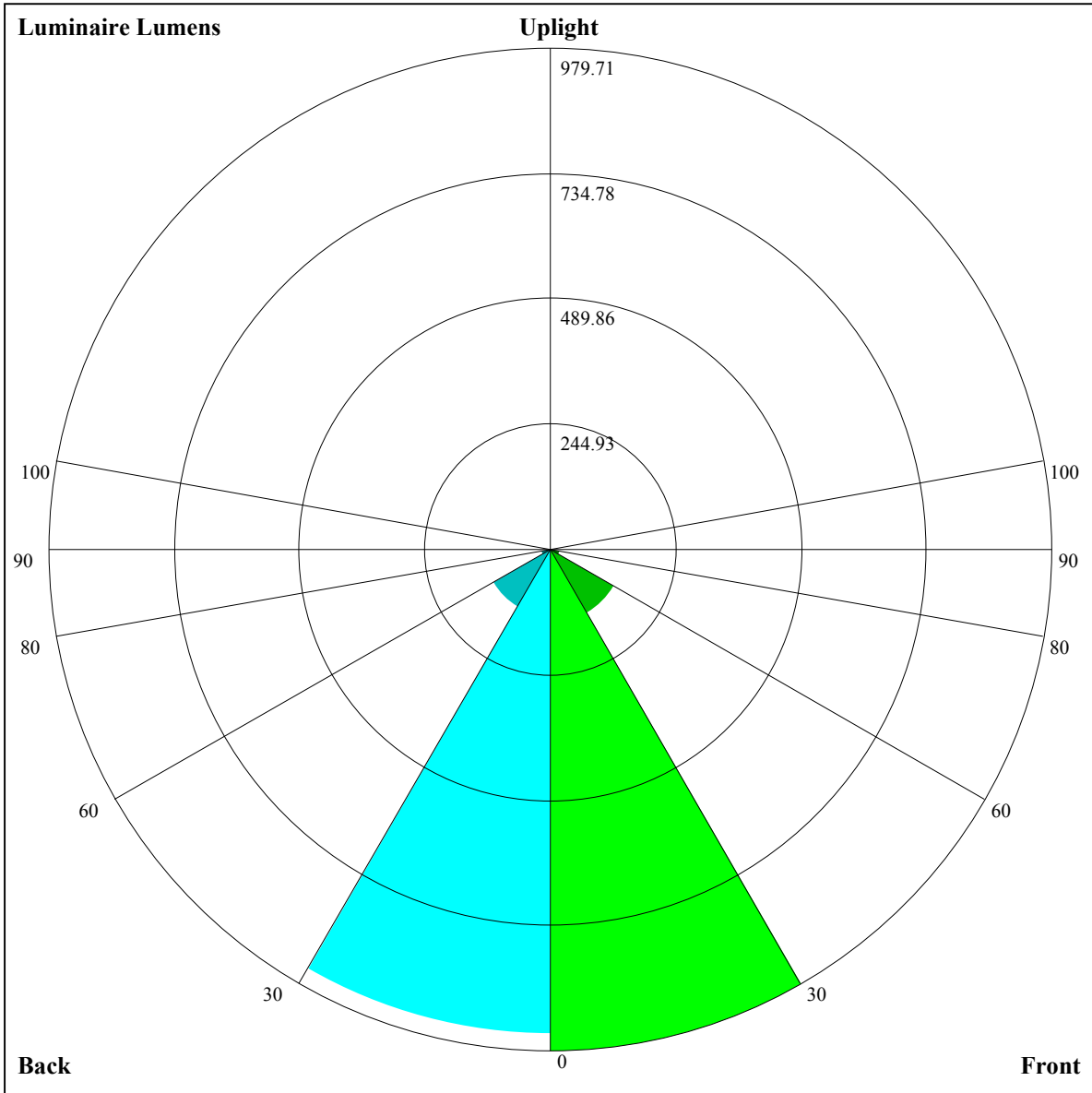
Illumination assessment according UGR											
Rf of Ceiling	70	70	50	50	30	70	70	50	50	30	
Rf of Wall	50	30	50	30	30	50	30	50	30	30	
Rf of Floor	20	20	20	20	20	20	20	20	20	20	
Room dimensions		Viewed crosswise					Viewed endwise				
X	Y										
2H	2H	非数字	非数字	非数字	非数字	非数字	非数字	非数字	非数字	非数字	
	3H	非数字	非数字	非数字	非数字	非数字	非数字	非数字	非数字	非数字	
	4H	非数字	非数字	非数字	非数字	非数字	非数字	非数字	非数字	非数字	
	6H	非数字	非数字	非数字	非数字	非数字	非数字	非数字	非数字	非数字	
	8H	非数字	非数字	非数字	非数字	非数字	非数字	非数字	非数字	非数字	
	12H	非数字	非数字	非数字	非数字	非数字	非数字	非数字	非数字	非数字	
4H	2H	非数字	非数字	非数字	非数字	非数字	非数字	非数字	非数字	非数字	
	3H	非数字	非数字	非数字	非数字	非数字	非数字	非数字	非数字	非数字	
	4H	非数字	非数字	非数字	非数字	非数字	非数字	非数字	非数字	非数字	
	6H	非数字	非数字	非数字	非数字	非数字	非数字	非数字	非数字	非数字	
	8H	非数字	非数字	非数字	非数字	非数字	非数字	非数字	非数字	非数字	
8H	12H	非数字	非数字	非数字	非数字	非数字	非数字	非数字	非数字	非数字	
	4H	非数字	非数字	非数字	非数字	非数字	非数字	非数字	非数字	非数字	
	6H	非数字	非数字	非数字	非数字	非数字	非数字	非数字	非数字	非数字	
	8H	非数字	非数字	非数字	非数字	非数字	非数字	非数字	非数字	非数字	
12H	12H	非数字	非数字	非数字	非数字	非数字	非数字	非数字	非数字	非数字	
	4H	非数字	非数字	非数字	非数字	非数字	非数字	非数字	非数字	非数字	
	6H	非数字	非数字	非数字	非数字	非数字	非数字	非数字	非数字	非数字	
	8H	非数字	非数字	非数字	非数字	非数字	非数字	非数字	非数字	非数字	
Variation with the observer position at spacings:											
S = 1.0H		非数字/非数字					非数字/非数字				
S = 1.5H		非数字/非数字					非数字/非数字				
S = 2.0H		非数字/非数字					非数字/非数字				
Standard tables:		BK0					BK0				
Uncorrected UGR		负无穷大					负无穷大				

UGR calculation is based on CIE Publ. 117 ,S/H = 0.25



RHOCC	80			70			50			30			10			0
RHOW	50	30	10	50	30	10	50	30	10	50	30	10	50	30	10	0
RCR	COEFFICIENTS OF UTILIZATION RHOF=20 CU															
0	0.98	0.98	0.98	0.96	0.96	0.96	0.92	0.92	0.92	0.88	0.88	0.88	0.84	0.84	0.84	0.83
1	0.92	0.90	0.88	0.90	0.88	0.87	0.87	0.85	0.84	0.84	0.83	0.81	0.81	0.80	0.79	0.78
2	0.86	0.83	0.80	0.85	0.82	0.79	0.82	0.80	0.78	0.80	0.78	0.76	0.77	0.76	0.74	0.73
3	0.81	0.77	0.74	0.80	0.76	0.74	0.78	0.75	0.73	0.76	0.73	0.71	0.74	0.72	0.70	0.69
4	0.77	0.72	0.69	0.76	0.72	0.69	0.74	0.71	0.68	0.72	0.70	0.67	0.71	0.68	0.67	0.65
5	0.73	0.68	0.65	0.72	0.68	0.65	0.70	0.67	0.64	0.69	0.66	0.64	0.68	0.65	0.63	0.62
6	0.69	0.65	0.61	0.68	0.64	0.61	0.67	0.63	0.61	0.66	0.63	0.60	0.65	0.62	0.60	0.59
7	0.66	0.61	0.58	0.65	0.61	0.58	0.64	0.60	0.58	0.63	0.60	0.57	0.62	0.59	0.57	0.56
8	0.63	0.58	0.55	0.62	0.58	0.55	0.61	0.58	0.55	0.61	0.57	0.55	0.60	0.57	0.54	0.53
9	0.60	0.55	0.53	0.59	0.55	0.52	0.59	0.55	0.52	0.58	0.55	0.52	0.57	0.54	0.52	0.51
10	0.57	0.53	0.50	0.57	0.53	0.50	0.56	0.53	0.50	0.56	0.52	0.50	0.55	0.52	0.50	0.49





Luminaire Lumens:

FL=979.71,FM=142.29,FH=17.67,FVH=6.27

BL=945.79,BM=131.3,BH=18.63,BVH=6.2

UL=0,UH=0

BUG Rating:B2-U0-G0

Intensity data(cd)

C/γ(°)	0.0	1.0	2.0	3.0	4.0	5.0	6.0	7.0	8.0
0.0	4085.51	4083.17	4079.08	4071.47	4050.99	4028.16	3995.97	3950.33	3885.37
45.0	4086.68	4086.68	4085.51	4077.91	4061.52	4034.60	4004.75	3961.45	3915.21
90.0	4083.76	4082.00	4069.13	4049.23	4020.55	3967.88	3918.14	3855.52	3765.40
135.0	4073.81	4073.22	4072.64	4056.84	4035.77	3991.88	3943.30	3886.54	3801.09
180.0	4085.51	4082.59	4078.49	4066.20	4037.53	4003.58	3959.69	3885.95	3813.97
225.0	4086.68	4083.76	4071.47	4052.74	4017.63	3967.30	3911.12	3843.23	3767.15
270.0	4083.76	4084.34	4084.93	4077.32	4062.11	4039.87	4007.68	3965.54	3900.58
315.0	4073.81	4074.39	4069.71	4059.76	4045.72	4021.72	3974.91	3929.26	3871.91
360.0	4085.51	4083.17	4079.08	4071.47	4050.99	4028.16	3995.97	3950.33	3885.37
C/γ(°)	9.0	10.0	11.0	12.0	13.0	14.0	15.0	16.0	17.0
0.0	3820.99	3743.74	3628.45	3520.77	3404.90	3251.57	3124.57	2996.41	2838.40
45.0	3837.96	3766.57	3684.05	3562.91	3456.40	3338.18	3184.27	3061.96	2934.38
90.0	3678.20	3554.13	3448.79	3332.91	3183.68	3060.79	2937.30	2809.14	2649.96
135.0	3725.02	3638.40	3535.40	3405.48	3293.70	3174.32	3050.25	2892.24	2765.25
180.0	3714.48	3620.26	3513.16	3401.39	3254.49	3129.84	3007.53	2884.63	2730.72
225.0	3652.45	3550.62	3440.60	3325.89	3177.83	3053.18	2929.11	2802.12	2639.42
270.0	3832.11	3734.38	3640.74	3543.01	3397.29	3276.15	3153.25	3030.35	2868.25
315.0	3799.34	3695.17	3596.85	3459.32	3341.69	3216.46	3063.13	2936.72	2805.63
360.0	3820.99	3743.74	3628.45	3520.77	3404.90	3251.57	3124.57	2996.41	2838.40
C/γ(°)	18.0	19.0	20.0	21.0	22.0	23.0	24.0	25.0	26.0
0.0	2707.89	2579.15	2443.37	2270.73	2123.84	1982.80	1845.86	1682.00	1543.88
45.0	2774.61	2642.93	2510.09	2343.88	2201.67	2060.64	1921.94	1755.15	1622.89
90.0	2520.62	2385.44	2248.49	2075.85	1934.81	1800.80	1635.76	1497.06	1159.68
135.0	2639.42	2476.15	2346.81	2206.94	2035.47	1895.60	1760.42	1597.72	1454.93
180.0	2598.46	2465.03	2285.36	2150.76	2010.89	1835.32	1696.63	1569.05	1386.46
225.0	2504.82	2333.94	2192.31	2053.03	1878.63	1746.37	1614.69	1478.92	1140.14
270.0	2743.01	2618.94	2482.00	2308.77	2177.10	2018.50	1851.13	1714.18	1541.54
315.0	2673.37	2503.65	2366.12	2229.18	2088.73	1917.26	1786.17	1657.42	1485.36
360.0	2707.89	2579.15	2443.37	2270.73	2123.84	1982.80	1845.86	1682.00	1543.88
C/γ(°)	27.0	28.0	29.0	30.0	31.0	32.0	33.0	34.0	35.0
0.0	1157.63	1157.63	1040.82	885.91	699.52	563.28	441.44	311.11	229.64
45.0	1483.60	1332.62	1137.74	981.48	793.62	652.00	523.25	378.70	304.38
90.0	1159.68	1005.01	852.44	670.38	537.30	418.20	316.14	214.37	163.10
135.0	1303.35	1107.89	951.63	804.74	666.04	534.95	387.48	311.98	311.98
180.0	1235.47	1086.24	934.08	735.10	596.99	469.99	355.88	308.47	308.47
225.0	1140.14	982.18	828.62	646.85	517.51	397.37	276.17	205.36	152.57
270.0	1404.01	1257.71	1058.15	904.23	750.32	604.60	448.93	342.42	295.60
315.0	1139.96	1139.96	983.41	831.14	688.40	523.02	403.16	301.39	206.35
360.0	1157.63	1157.63	1040.82	885.91	699.52	563.28	441.44	311.11	229.64
C/γ(°)	36.0	37.0	38.0	39.0	40.0	41.0	42.0	43.0	44.0
0.0	176.27	146.60	123.89	111.25	101.77	93.99	85.38	79.24	72.51
45.0	304.38	162.17	132.26	116.69	105.46	96.74	87.61	81.17	75.49
90.0	135.77	119.33	104.58	95.80	88.54	80.59	75.03	69.99	64.49
135.0	149.70	128.22	110.61	100.54	92.29	83.57	77.54	72.10	67.24
180.0	144.61	122.37	110.72	99.55	92.06	85.33	77.83	72.51	67.77
225.0	131.38	116.93	106.51	96.21	89.19	82.93	77.31	70.93	66.48
270.0	295.60	147.71	123.19	110.67	101.48	92.06	85.68	78.42	73.33
315.0	159.65	134.13	118.16	104.05	95.68	88.72	82.40	75.55	70.46
360.0	176.27	146.60	123.89	111.25	101.77	93.99	85.38	79.24	72.51

Intensity data(cd)

C/γ(°)	45.0	46.0	47.0	48.0	49.0	50.0	51.0	52.0	53.0
0.0	67.65	63.20	58.29	54.78	51.44	48.28	44.65	42.08	39.62
45.0	69.17	64.78	60.69	56.12	52.73	49.57	46.00	43.42	41.02
90.0	60.57	57.00	52.79	49.74	46.94	44.36	41.38	39.15	37.10
135.0	61.86	58.11	54.66	51.38	48.46	45.18	42.78	39.91	37.86
180.0	63.61	59.87	55.65	52.38	49.39	46.70	43.54	41.08	38.22
225.0	62.50	58.05	54.78	51.68	48.05	45.41	42.84	39.80	37.63
270.0	68.59	63.38	59.58	56.18	52.96	49.22	46.47	43.83	41.26
315.0	65.95	60.75	57.06	52.85	49.63	46.76	44.01	40.85	38.45
360.0	67.65	63.20	58.29	54.78	51.44	48.28	44.65	42.08	39.62
C/γ(°)	54.0	55.0	56.0	57.0	58.0	59.0	60.0	61.0	62.0
0.0	37.34	34.82	33.01	31.31	29.38	27.97	26.69	25.22	24.11
45.0	38.74	36.23	34.41	32.77	31.19	29.38	28.03	26.80	25.16
90.0	35.23	33.01	31.37	29.50	28.09	26.80	25.28	24.05	22.77
135.0	35.93	33.65	31.95	30.49	28.68	27.33	26.22	25.05	23.41
180.0	36.17	34.24	32.07	30.49	29.09	27.51	26.34	25.11	23.82
225.0	35.58	33.24	31.60	30.08	28.68	27.04	25.75	24.46	23.12
270.0	38.39	36.28	34.35	32.07	30.49	29.03	27.33	26.10	24.52
315.0	36.34	34.29	32.01	30.43	28.91	27.21	25.93	24.70	23.23
360.0	37.34	34.82	33.01	31.31	29.38	27.97	26.69	25.22	24.11
C/γ(°)	63.0	64.0	65.0	66.0	67.0	68.0	69.0	70.0	71.0
0.0	22.59	21.36	20.25	19.08	17.50	16.62	16.09	15.74	15.68
45.0	23.94	22.36	21.13	20.07	18.55	17.56	17.03	16.97	17.38
90.0	21.24	20.13	18.96	17.79	16.91	16.27	15.86	15.45	15.04
135.0	22.24	21.13	19.96	18.49	17.56	16.97	16.50	16.62	17.38
180.0	22.24	21.01	19.90	18.67	17.79	17.44	17.32	17.32	17.62
225.0	21.59	20.42	19.08	18.38	18.26	18.84	19.61	19.96	19.78
270.0	23.29	21.95	20.66	19.55	17.97	16.97	16.33	15.86	15.39
315.0	21.95	20.42	19.37	18.20	17.03	16.04	15.51	15.16	14.86
360.0	22.59	21.36	20.25	19.08	17.50	16.62	16.09	15.74	15.68
C/γ(°)	72.0	73.0	74.0	75.0	76.0	77.0	78.0	79.0	80.0
0.0	15.68	15.45	14.98	14.63	14.22	13.75	13.34	13.11	12.99
45.0	17.21	16.74	16.15	15.51	15.04	14.28	13.58	13.28	13.11
90.0	14.69	14.34	14.05	13.75	13.40	13.17	12.93	12.82	12.76
135.0	17.91	18.14	18.38	18.43	18.49	18.38	17.26	16.21	15.27
180.0	18.26	18.61	18.61	18.55	18.14	17.91	17.03	16.39	14.81
225.0	19.14	19.02	18.79	17.85	17.38	16.68	16.09	14.69	13.46
270.0	15.04	14.75	14.34	14.05	13.69	13.40	13.17	12.99	12.82
315.0	14.46	14.16	13.87	13.58	13.28	13.11	12.82	12.76	12.76
360.0	15.68	15.45	14.98	14.63	14.22	13.75	13.34	13.11	12.99
C/γ(°)	81.0	82.0	83.0	84.0	85.0	86.0	87.0	88.0	89.0
0.0	13.05	13.05	12.99	12.70	11.94	11.00	10.53	10.36	9.77
45.0	12.99	12.87	12.70	12.58	12.11	11.29	10.59	10.36	9.77
90.0	12.64	12.58	12.47	11.59	11.00	10.59	10.24	9.54	9.42
135.0	13.69	12.64	12.64	12.06	11.18	10.65	10.42	9.60	9.36
180.0	13.28	12.70	12.35	11.59	10.89	10.65	10.30	10.07	9.71
225.0	12.99	12.76	12.35	11.35	10.65	10.53	9.95	9.42	9.48
270.0	12.82	12.93	12.93	12.82	11.94	10.83	10.48	10.30	9.71
315.0	12.93	13.05	12.87	12.58	11.35	10.65	10.42	10.07	9.48
360.0	13.05	13.05	12.99	12.70	11.94	11.00	10.53	10.36	9.77

Intensity data(cd)

C/γ(°)	90.0
0.0	9.48
45.0	9.42
90.0	9.54
135.0	9.54
180.0	9.66
225.0	9.66
270.0	9.42
315.0	9.36
360.0	9.48